

TOPOGRAPHIC SURVEY FOR PROPOSED ROAD IMPROVEMENTS ENID, OKLAHOMA



Basis of Bearing: Grid Bearings based on the Oklahoma State Plane Coordinate System, NAD83, North Zone.

SURVEY CONTROL

STA	NORTHING	EASTING	ELEV	DESC
101	511615.781	1995633.046	1271.36	CUT "X"
102	511604.306	1996107.102	1268.86	#4 BAR W/ "LEMKE CONTROL" CAP
103	511951.957	1995624.826	1272.37	#4 BAR W/ "LEMKE CONTROL" CAP
104	511510.141	1995175.920	1269.96	#4 BAR W/ "LEMKE CONTROL" CAP
105	511148.848	1995646.545	1268.32	#4 BAR W/ "LEMKE CONTROL" CAP
106	512610.346	1995525.798	1272.14	#4 BAR W/ "LEMKE CONTROL" CAP
107	513272.953	1995520.132	1275.07	#4 BAR W/ "LEMKE CONTROL" CAP
108	513929.177	1995508.539	1274.74	#4 BAR W/ "LEMKE CONTROL" CAP

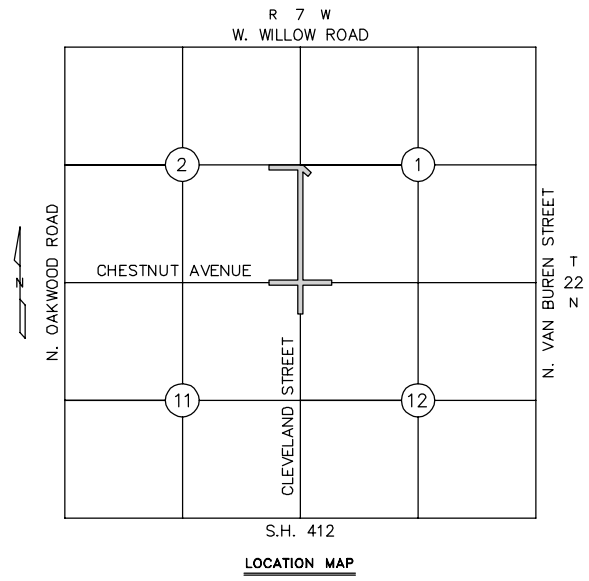
The Horizontal and Vertical Datum are derived from measurements observed from CORS96 Base Stations OKDT, LMNO, and OKPR (OPUS), which are based on the Oklahoma State Plane Coordinate System, NAD83 (CORS96), North Zone. The Vertical Datum is NAVD88.

TOPOGRAPHIC LEGEND

	AIR CONDITIONER UNIT		BARBED WIRE FENCE
	FIRE HYDRANT		CHAINLINK FENCE
	GAS METER		PIPERAIL FENCE
	GAS VALVE		ELECTRIC UNDERGROUND LINE
	GAS VENT		OVERHEAD ELECTRIC LINE
	GROUND TRANSFORMER		GAS LINE
	GUARD POST		GAS LINE PER ATLAS
	LIGHT POLE		SANITARY SEWER LINE
	STORM DRAIN MANHOLE		SANITARY SEWER LINE PER ATLAS
	SANITARY SEWER MANHOLE		STORM DRAIN LINE
	TELEPHONE MANHOLE		UNDERGROUND TELEPHONE LINE
	TRANSFORMER POLE		UNDERGROUND TELEPHONE LINE PER ATLAS
	POWER POLE		UNDERGROUND FIBER OPTIC LINE
	MONUMENT FOUND		WATER LINE
	MONUMENT SET		WATER LINE PER ATLAS
	SANITARY SEWER CLEANOUT		GROUND SURFACE CONTOUR
	SIGN		CURB AND GUTTER
	TELEPHONE RISER		SURFACE DRAINAGE FLOWLINE
	TRAFFIC/ELECTRIC PULL BOX		SPOT ELEVATION
	WATER METER		CONCRETE
	WATER VALVE BOX		ASPHALT
	MAILBOX		GRAVEL

SHEET INDEX

- 1. TITLE SHEET
- 2.-6. TOPOGRAPHIC SURVEY SHEETS
- 7.-11. SURVEY DATA CONTROL SHEETS



Professional Engineer Seal for Matt C. Barnum, P.L.S. No. 1742, State of Oklahoma. The seal includes the text: 'If the surveyor's signature is not red colored, the plan is a copy that should be assumed to contain unauthorized alterations. The certification contained on this document shall not apply to any copies.'

MATT C. BARNUM, P.L.S. No. 1742
DATED: 4/16/2014
Last Field Visit Date: January 8, 2014



UTILITY WARNING:
The underground utilities shown have been located from record documents or field locations by the operator. The surveyor makes no guarantee that the underground utilities shown comprise all such utilities in the area either in service or abandoned. The surveyor further does not warrant that the underground utilities shown are in the exact location indicated although the surveyor does certify that they are located as accurately as possible from the information available. The surveyor has not physically located the underground utilities.

Utility elevations and sizes may have been measured under adverse field conditions. Upon exposing the utility, elevations and line sizes should be verified by the contractor prior to construction. Contractor should verify critical elevations using the benchmark provided by the surveyor or engineer. Any discrepancies should be immediately brought to the engineer's and surveyor's attention.

Call OKIE Ticket Nos. 13021516502337, 13121314021658, and 13121314171731.

UTILITIES NOTIFIED
USIC/ONG/ENID
USIC/OG&E/ENID
MUSTANG FUEL CORP/WAUKOMIS
ENID CITY OF
HILAND PARTNERS, LP
SUDDENLINK COMMUNICATIONS / FOREIGN
USIC/PIONEER TELEPHONE/FOREIGN
USIC/AT&T
HUNTERS HILL APARTMENTS

LEMKE LAND SURVEYING, Inc.
3028 BART CORNER DRIVE, NORMAN, OK 73072
PH: (405) 366-8841 FAX: (405) 366-8840
http://www.lemke-lls.com

MB	Date	Description
01/17		
01/17		
01/20		
04/16		

DR/CG	TG	MB	Date	Scale	Project No.
			04/02/2013	1" = 30'	13025

TOPOGRAPHIC SURVEY
PROPOSED ROAD IMPROVEMENTS
INTERSECTION OF N. CLEVELAND STREET & W. CHESTNUT AVENUE
ENID, OKLAHOMA
TETRA TECH, INC.
119 N. ROBINSON AVENUE, SUITE 700, NORMAN, OK 73102

Sheet Number
1
Sheet 1 of 11